



FortiCel™ and FortiCel™ Crawlspace



CertainTeed
SAINT-GOBAIN



CertainTeed has helped shape the building products industry since 1904, when it was founded as General Roofing Manufacturing Company. The firm's slogan, "Quality Made Certain, Satisfaction Guaranteed," quickly inspired the name CertainTeed.

Today, CertainTeed is North America's leading brand of exterior and interior building products, including roofing, siding, fence, decking, railing, trim, foundations, pipe, insulation, gypsum and ceilings.

Add Mold Protection To Your Home

A photograph of a white picket fence in the foreground, with a white house in the background. The house has a red door, a white picket fence, and an American flag. The text "Add Mold Protection To Your Home" is overlaid on the top half of the image.

Thank you for taking the time to consider FortiCel™ as an important addition to your home's construction. Inside you will find valuable information about how we provide mold preventive technologies that benefit homeowners across North America.

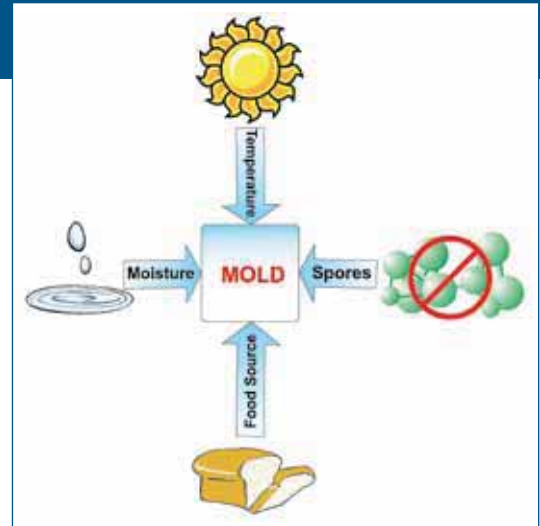
What is Mold?

- ✓ Mold is part of the natural environment and reproduces by means of tiny spores invisible to the naked eye.
- ✓ Mold floats through outdoor and indoor air.
- ✓ Mold begins to grow when it is exposed to a wet surface and has shelter as well as a food source.
- ✓ There are many types of mold and most are dependent on moisture to grow.
- ✓ Mold requires four components to grow: mold spores, moisture, food source and temperature.

Use FortiCel™ to Prevent Mold on All Coated Surfaces

Mold is not a structural concern for you now that your builder uses FortiCel™.

FortiCel™ is exceedingly effective because it eliminates the spore's ability to grow even when the other elements are present, making it unique and outstanding in its prevention of mold growth.





What is FortiCel™?

FortiCel™ is a coating system that is spray-applied to the structural framing surfaces of your home. Over the life of the building, no mold will grow on its coating surface.

How Does FortiCel™ Work?

Through cutting-edge proprietary coating technology, FortiCel™ provides a finished surface on all building components that will prevent mold growth on its coating surface. This coating is virtually permanent and is backed by full 25-year warranty protection.

Is FortiCel™ Application Common?

Yes! FortiCel™ is being applied in homes throughout the United States.

Is FortiCel™ Safe?

FortiCel™ is absolutely safe. As a product with zero VOCs and no off-gassing, FortiCel™ qualifies as a green building product. Rest assured, FortiCel™ provides a great deal of protection and added structural sustainability, but is not hazardous in any way.

How Does the FortiCel™ Warranty Work?

Upon closing the transaction for your home, you will receive documents outlining the terms and conditions of the FortiCel™ warranty as well as an outline of all areas in your home that have been treated. If at any point in the future you suspect that mold growth may be taking place in a treated area, simply call our toll-free number listed on your warranty document. In the unlikely event that growth has occurred, all remediation expenses associated with removing that growth will be covered by your warranty, eliminating the possibility of unexpected and costly repairs.

Why Do I Need FortiCel™?

FortiCel™ helps prevent mold growth that may cause unnecessary damage to the structural framing of your house or threaten your family's health. Apply FortiCel™ to protect your home and family against mold.



Why Should I Choose FortiCel™ For My Home?

Key Features of FortiCel™

- ✓ 25-year warranty
- ✓ Eliminates mold spores' ability to grow
- ✓ Scientifically proven — tested by numerous independent labs throughout the U.S.
- ✓ Provides long-term results — remaining effective for 70+ years

Key Benefits of FortiCel™

- ✓ Applied by professional applicators
- ✓ Prevents mold on all coated surfaces
- ✓ Peace of mind
- ✓ No harmful effects—your family, pets and entire household are safe
- ✓ Maximizes value of your home
- ✓ Fully transferable warranty to future homeowners

This product is manufactured by Protective Coatings Group for exclusive distribution by CertainTeed Corporation.

CertainTeed
SAINT-GOBAIN



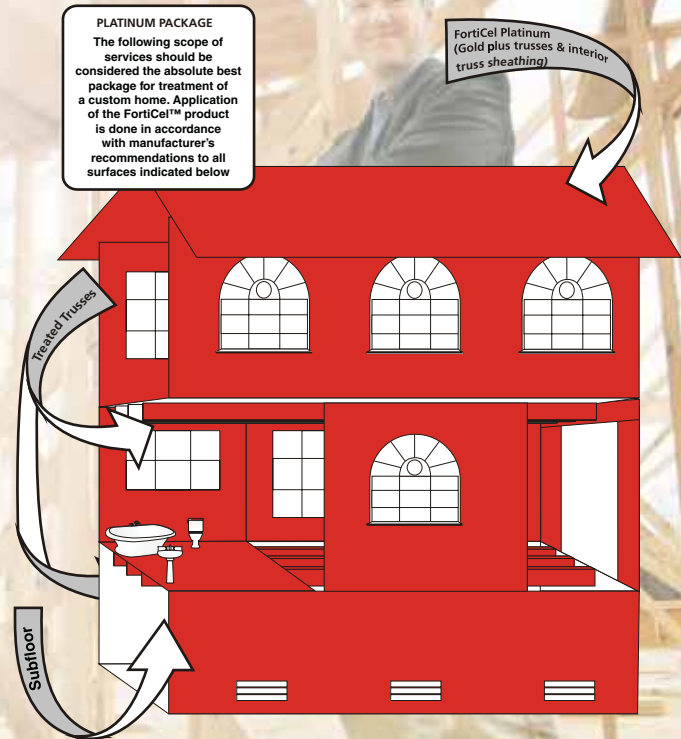
CertainTeed
SAINT-GOBAIN

PLATINUM Protection Plan

SCOPE OF SERVICE:	
Exterior Walls	The exposed interior portion of the home or unit's exterior and/or common walls is coated with FortiCel™. This includes areas surrounding windows, doors, plumbing runs and other areas of possible moisture intrusion via the exterior walls. This treatment is done from the subfloors to the bottom portion of the top plate.
Wet Areas	Areas included are those most susceptible to moisture intrusion. The wet areas to be treated include: the walls surrounding the kitchen and bathrooms; subfloors of the bathrooms; subfloors of the kitchen; subfloors of the laundry room; and a 3-foot apron around all plumbing stubs and stub penetrations.
Interior Walls	Includes coating of the exposed surface of the walls not included as part of the exterior walls that are present within the structure. All exposed surfaces of the interior framing from the subfloors to the bottom portion of the top plate are treated.
Trusses	Includes the application of FortiCel™ to all exposed surfaces of the trusses in the home. The top portion of the plate line is also treated.
Roof Sheathing	Includes the treatment of all exposed surfaces of the roof sheathing within the home, including any attic space within the home and over the garage.
COST	

This product is manufactured by Protective Coatings Group for exclusive distribution by CertainTeed Corporation.

CertainTeed
SAINT-GOBAIN



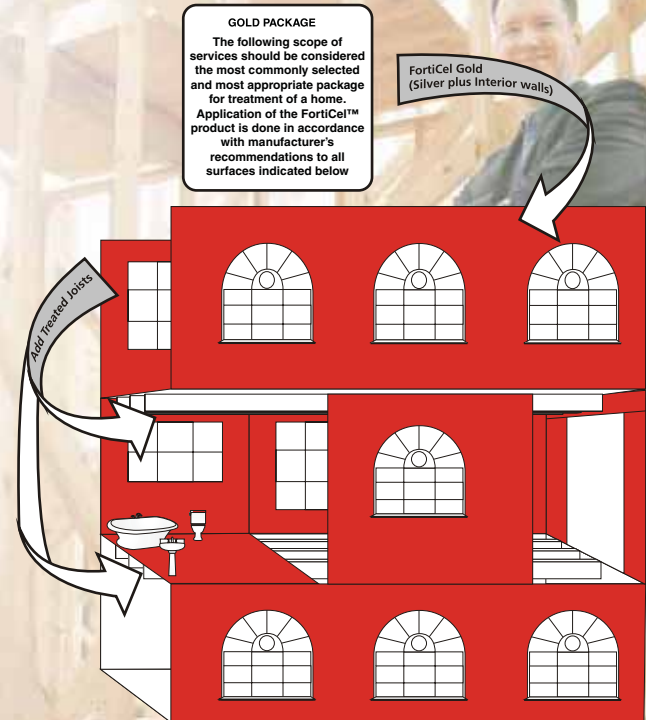
FORTiCEL™
25 YEAR WARRANTY
Mold Prevention

GOLD Protection Plan

SCOPE OF SERVICE:	
Exterior Walls	The exposed interior portion of the home or unit's exterior and/or common walls is coated with FortiCel™. This includes areas surrounding windows, doors, plumbing runs and other areas of possible moisture intrusion via the exterior walls. This treatment is done from the subfloors to the bottom portion of the top plate.
Wet Areas	Areas included are those most susceptible to moisture intrusion. The wet areas to be treated include: the walls surrounding the kitchen and bathrooms; subfloors of the bathrooms; subfloors of the kitchen; subfloors of the laundry room; and a 3-foot apron around all plumbing stubs and stub penetrations.
Interior Walls	Includes coating of the exposed surface of the walls not included as part of the exterior walls that are present within the structure. All exposed surfaces of the interior framing from the subfloors to the bottom portion of the top plate are treated.
COST	

This product is manufactured by Protective Coatings Group for exclusive distribution by CertainTeed Corporation.

CertainTeed
SAINT-GOBAIN



FORTiCEL
25 YEAR WARRANTY
Mold Prevention

SILVER Protection Plan

SCOPE OF SERVICE:

Exterior Walls

The exposed interior portion of the home or unit's exterior and/or common walls is coated with FortiCel™. This includes areas surrounding windows, doors, plumbing runs and other areas of possible moisture intrusion via the exterior walls. This treatment is done from the subfloors to the bottom portion of the top plate.

Wet Areas

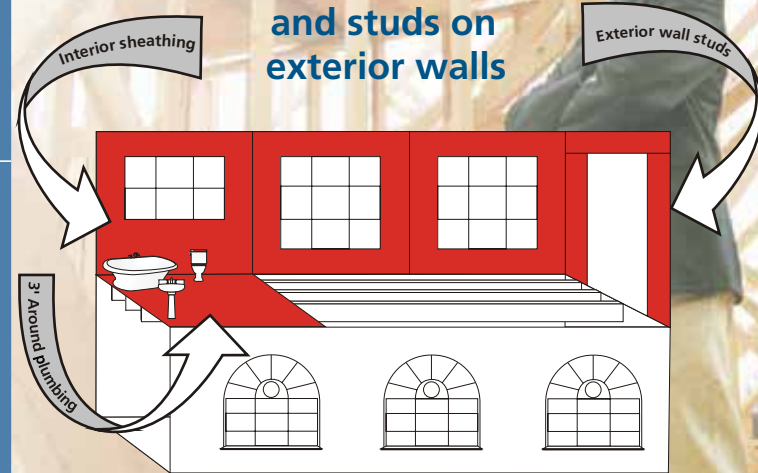
Areas included are those most susceptible to moisture intrusion. The wet areas to be treated include: the walls surrounding the kitchen and bathrooms; subfloors of the bathrooms; subfloors of the kitchen; subfloors of the laundry room; and a 3-foot apron around all plumbing stubs and stub penetrations.

COST

This product is manufactured by Protective Coatings Group for exclusive distribution by CertainTeed Corporation.

CertainTeed
SAINT-GOBAIN

**FortiCel™ on all
interior sheathing
and studs on
exterior walls**



FORTiCEL™
25 YEAR WARRANTY
Mold Prevention

BRONZE Protection Plan

SCOPE OF SERVICE:

Wet Areas

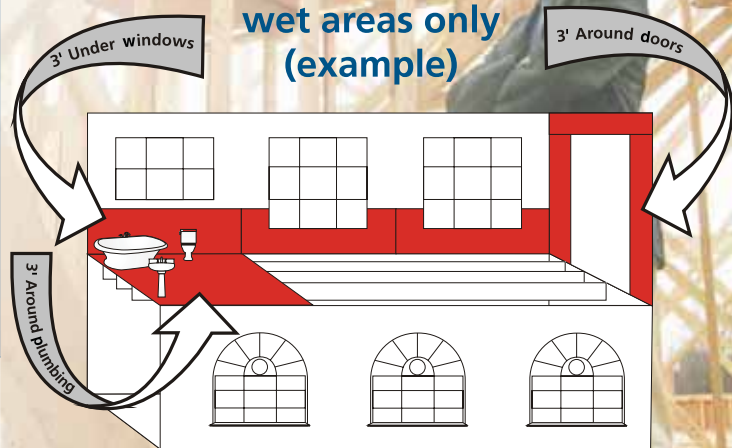
Areas included are those most susceptible to moisture intrusion. The wet areas to be treated include: the walls surrounding the kitchen and bathrooms; subfloors of the bathrooms; subfloors of the kitchen; subfloors of the laundry room; and a 3-foot apron around all plumbing stubs and stub penetrations.

COST

This product is manufactured by Protective Coatings Group for exclusive distribution by CertainTeed Corporation.

CertainTeed
SAINT-GOBAIN

FortiCel™ 3-foot perimeter around wet areas only (example)



FORTICEL
25 YEAR WARRANTY
Mold Prevention

Crawlspace / Basement Treatment

SCOPE OF SERVICE:	
Floor Boards	The exposed underside of the subfloors is coated with FortiCel™.
Joists	The areas to be treated include all exposed floor joists.
COST	

This product is manufactured by Protective Coatings Group for exclusive distribution by CertainTeed Corporation.

CertainTeed
SAINT-GOBAIN



FORTICEL
25 YEAR WARRANTY
Mold Prevention



Protective Coatings Group
501 Deanna Lane, Ste "B", Charleston, SC 29492
www.4PCG.com info@4pcg.com
(877) 729-MOLD (6653) • (866) 306-4PCG (4724) fax

CertainTeed
SAINT-GOBAIN

This product is manufactured by Protective Coatings Group for exclusive distribution by CertainTeed Corporation.